



India Meteorological Department  
Earth System Science Organisation  
(Ministry of Earth Sciences)

BULLETIN NO. : 12 (ARB/02/2020)

TIME OF ISSUE: 1150 HOURS IST

DATED: 01.06.2020

FROM: INDIA METEOROLOGICAL DEPARTMENT (FAX NO. 24643965/24699216/24623220)

TO: CONTROL ROOM, NDM, MINISTRY OF HOME AFFAIRS (FAX.NO. 23092398/23093750)

CONTROL ROOM NDMA (FAX.NO. 26701729)

CABINET SECRETARIAT (FAX.NO.23012284, 23018638)

PS TO HON'BLE MINISTER FOR S & T AND EARTH SCIENCES (FAX NO.23316745)

SECRETARY, MOES, (FAX NO. 24629777)

H.Q. (INTEGRATED DEFENCE STAFF AND CDS) (FAX NO. 23005137/23005147)

DIRECTOR GENERAL, DOORDARSHAN (23385843) DIRECTOR GENERAL, AIR (23421101, 23421105, 23421219)

PIB MOES (FAX NO. 23389042)

UNI (FAX NO. 23355841)

D.G. NATIONAL DISASTER RESPONSE FORCE (NDRF) (FAX NO. 26105912, 2436 3260)

DIRECTOR, PUNCTUALITY, INDIAN RAILWAYS (FAX NO. 23388503)

CHIEF SECRETARY, KERALA (FAX NO. 0471-2327176)

ADMINISTRATOR, LAKSHADWEEP ISLANDS (FAX NO. 0413-262184)

ADMINISTRATOR, UNION TERRITORY OF DAMAN & DIU (0260-2230775)

ADMINISTRATOR, UNION TERRITORY OF DADRA NAGAR HAVELI (0260-2230775)

CHIEF SECRETARY, KARNATAKA (FAX NO. 080-22258913)

CHIEF SECRETARY, GOA (FAX NO. 0832-2415201)

CHIEF SECRETARY, MAHARASHTRA (FAX NO. 022- 22028594)

CHIEF SECRETARY, GUJARAT (FAX NO. 079-23250305)

CHIEF SECRETARY, DAMAN & DIU (FAX NO. 0260-2230775)

CHIEF SECRETARY, DADRA & NAGAR HAVELI (FAX NO. 0260-2645466)

**Sub: Depression over Eastcentral and adjoining Southeast Arabian Sea: Cyclone Alert for north Maharashtra - south Gujarat coasts: Yellow message**

The **depression** over Eastcentral and adjoining Southeast Arabian Sea moved nearly northward with a speed of 07 kmph during past 3 hours and lay centred at 0830 hours IST of today the 1<sup>st</sup> June, 2020 near latitude 13.2°N and longitude 71.4°E about 360 km southwest of Panjim (Goa), 670km south-southwest of Mumbai (Maharashtra) and 900 km south-southwest of Surat (Gujarat).

It is very likely to intensify into a Deep Depression over Eastcentral and adjoining Southeast Arabian Sea during next 12 hours and **intensify further into a Cyclonic Storm over Eastcentral Arabian Sea during the subsequent 24 hours**. It is very likely to move nearly northwards initially till 02<sup>nd</sup> June Morning and then recurve north-northeastwards and cross north Maharashtra and south Gujarat coasts between Harihareshwar (Raigad, Maharashtra) and Daman during evening/ night of 3<sup>rd</sup> June .

Forecast track and intensity are given in the following table:

Date/Time(IST)	Position (Lat. °N/ long. °E)	Maximum sustained surface wind speed (Kmph)	Category of cyclonic disturbance
01.06.20/0830	13.2/71.4	40-50 gusting to 60	Depression
01.06.20/1130	13.3/71.2	45-55 gusting to 65	Depression
01.06.20/1730	13.7/71.0	50-60 gusting to 70	Deep Depression
01.06.20/2330	14.2/70.9	55-65 gusting to 75	Deep Depression
02.06.20/0530	14.9/70.8	60-70 gusting to 80	Cyclonic Storm
02.06.20/1730	15.7/70.9	80-90 gusting to 100	Cyclonic Storm
03.06.20/0530	17.0/71.4	90-100 gusting to 110	Severe Cyclonic Storm
03.06.20/1730	18.4/72.2	105-115 gusting to 125	Severe Cyclonic Storm
04.06.20/0530	19.6/72.9	95-105 gusting to 115	Severe Cyclonic Storm
04.06.20/1730	20.8/73.5	60-70 gusting to 80	Cyclonic Storm

**Spatial rainfall distribution: Isolated: <25%, A few: 26-50%, Many: 51-75%, Most: 76-100%**

**Rainfall amount (mm): Heavy rain: 64.5 – 115.5, Very heavy rain: 115.6 – 204.4, Extremely heavy rain: 204.5 or more.**

## Warnings:

### (i) **Rainfall:**

Under the influence of the Depression, light to moderate rainfall at most places with isolated heavy falls very likely over Lakshadweep area, north Kerala and coastal Karnataka, today the 1<sup>st</sup> June. Light to moderate rainfall at most places with isolated heavy to very heavy falls at isolated places very likely over south Konkan & Goa on 01<sup>st</sup> June. Light to moderate rainfall at most places with isolated heavy to very heavy falls very likely over Konkan & Goa on 02<sup>nd</sup> June and over south Konkan & Goa on 03<sup>rd</sup> June.

Light to moderate rainfall at most places with heavy to very heavy falls at a few places and extremely heavy falls at isolated places over north Konkan and north Madhya Maharashtra on 03<sup>rd</sup> & 04<sup>th</sup> June.

Light to moderate rainfall at most places with isolated heavy to very heavy falls very likely over south Gujarat state, Daman, Diu, Dadra & Nagar Haveli on 03<sup>rd</sup> June and with heavy to very heavy falls at a few places and extremely heavy falls at isolated places over south Gujarat state, Daman, Diu, Dadra & Nagar Haveli and on 04<sup>th</sup> June.

### (ii) **Wind warning**

Squally wind, speed reaching 40-50 kmph gusting to 60 kmph, is prevailing over Eastcentral and adjoining southeast Arabian Sea. It is very likely to become 50-60 kmph gusting to 70kmph over Eastcentral and adjoining southeast Arabian Sea during next 48 hours. It will gradually increase becoming Gale wind speed reaching 60-70 kmph gusting to 80 kmph over eastcentral Arabian Sea and along and off south Maharashtra coast from 2<sup>nd</sup> June morning and further becoming 105-115 kmph gusting to 125 kmph over eastcentral and northeast Arabian Sea along & off Maharashtra coast (Raigad, Mumbai, Palghar, Thane), 90-100 kmph gusting to 110 kmph along & off Valsad, Navsari districts of Gujarat, and 80-90 kmph gusting to 100 kmph along & off Ratnagiri, Sindhudurg districts of Maharashtra, 70-80 kmph gusting to 90 kmph along & off Surat & Bharuch districts of south Gujarat from 3<sup>rd</sup> June evening.

Squally wind, speed reaching 50-60 kmph gusting to 70 kmph is likely prevail over eastcentral Arabian Sea along and off Karnataka-Goa coasts during next 48 hours.

Squally wind, speed reaching 40-50 kmph gusting to 60 kmph is likely to prevail over Lakshadweep area and along & off Kerala coast during next 48 hours.

### (iii) **Sea condition**

The Sea condition is very likely to be rough to very rough over Eastcentral & adjoining Southeast Arabian Sea during next 48 hours. It would become very rough to High over eastcentral & southeast Arabian Sea and along & off Karnataka-Goa coasts during next 48 hours. It will be High to very High over Eastcentral Arabian Sea along and off Maharashtra coast from 2<sup>nd</sup> June.

The Sea condition is very likely to be very rough to High over northeast Arabian Sea along & off Gujarat coast from 3<sup>rd</sup> June.

### (iv) **Fishermen Warning**

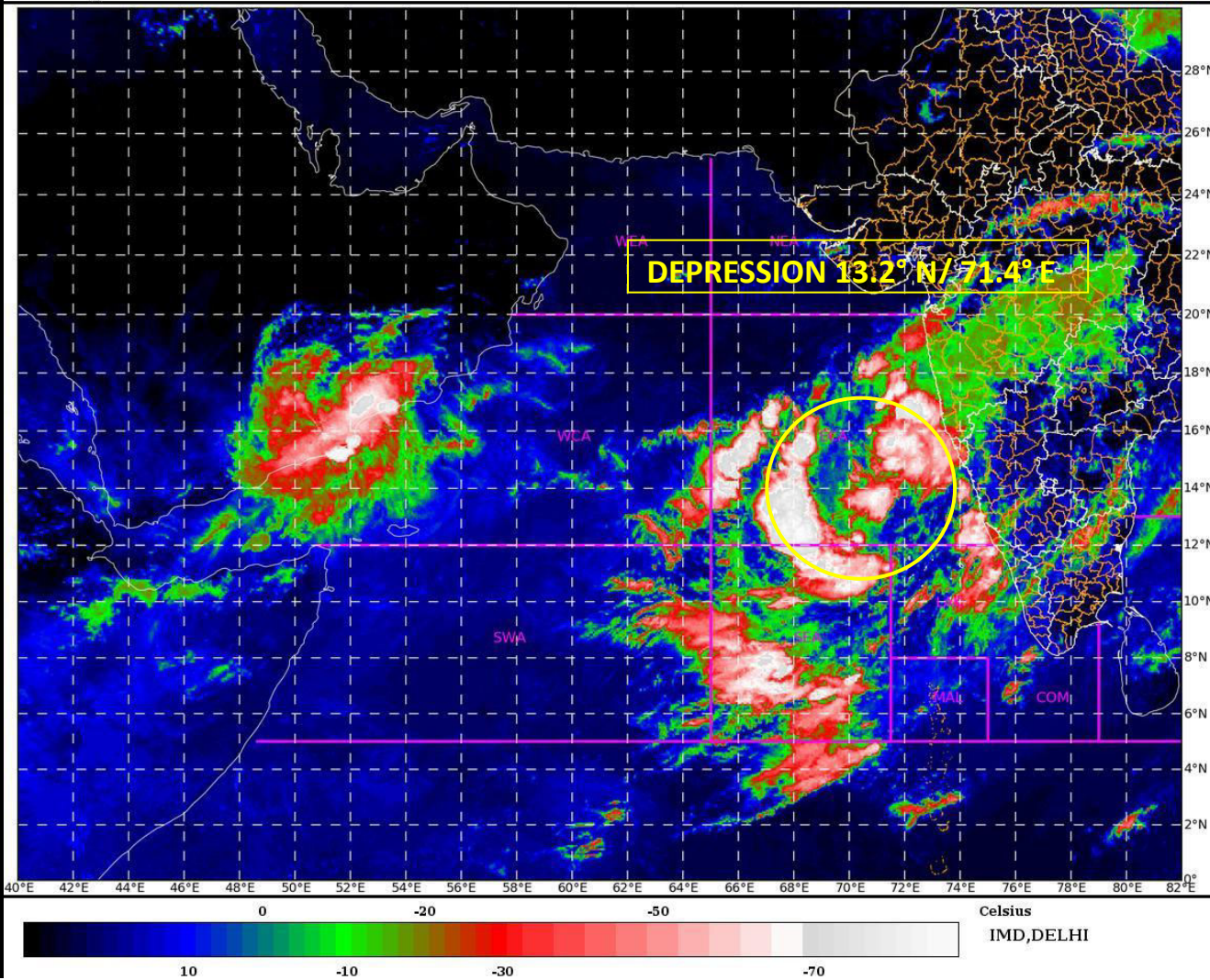
Fishermen are advised not to venture into southeast Arabian Sea, Lakshadweep area and along & off Kerala coast during next 48 hours; eastcentral Arabian Sea and along & off Karnataka-Goa coasts till 3<sup>rd</sup> June; eastcentral Arabian Sea along & off Maharashtra coast and northeast Arabian Sea along & off Gujarat coast during 3<sup>rd</sup> – 4<sup>th</sup> June.

*The next bulletin will be issued at 1430 hrs IST of today, the 1<sup>st</sup> June, 2020.*

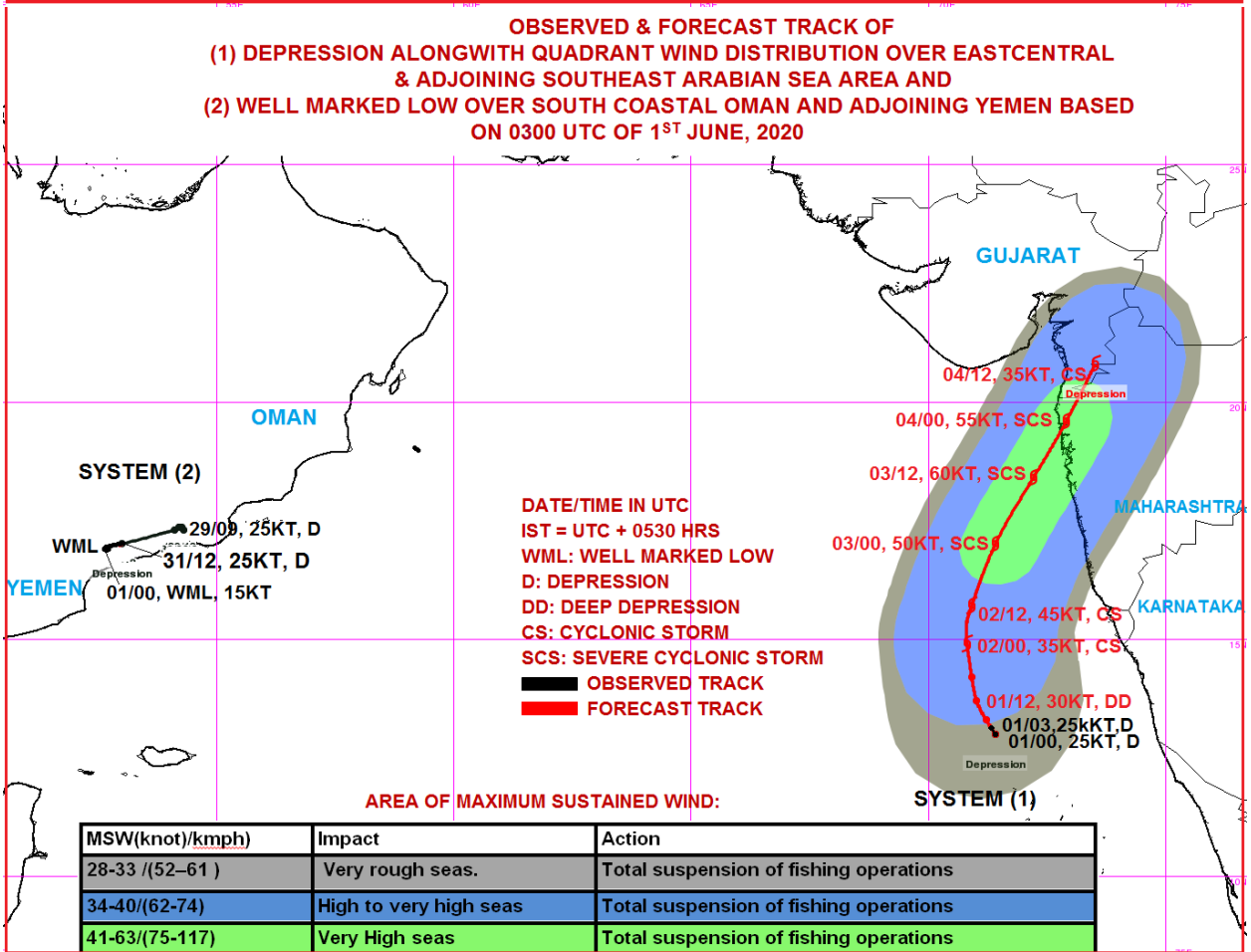
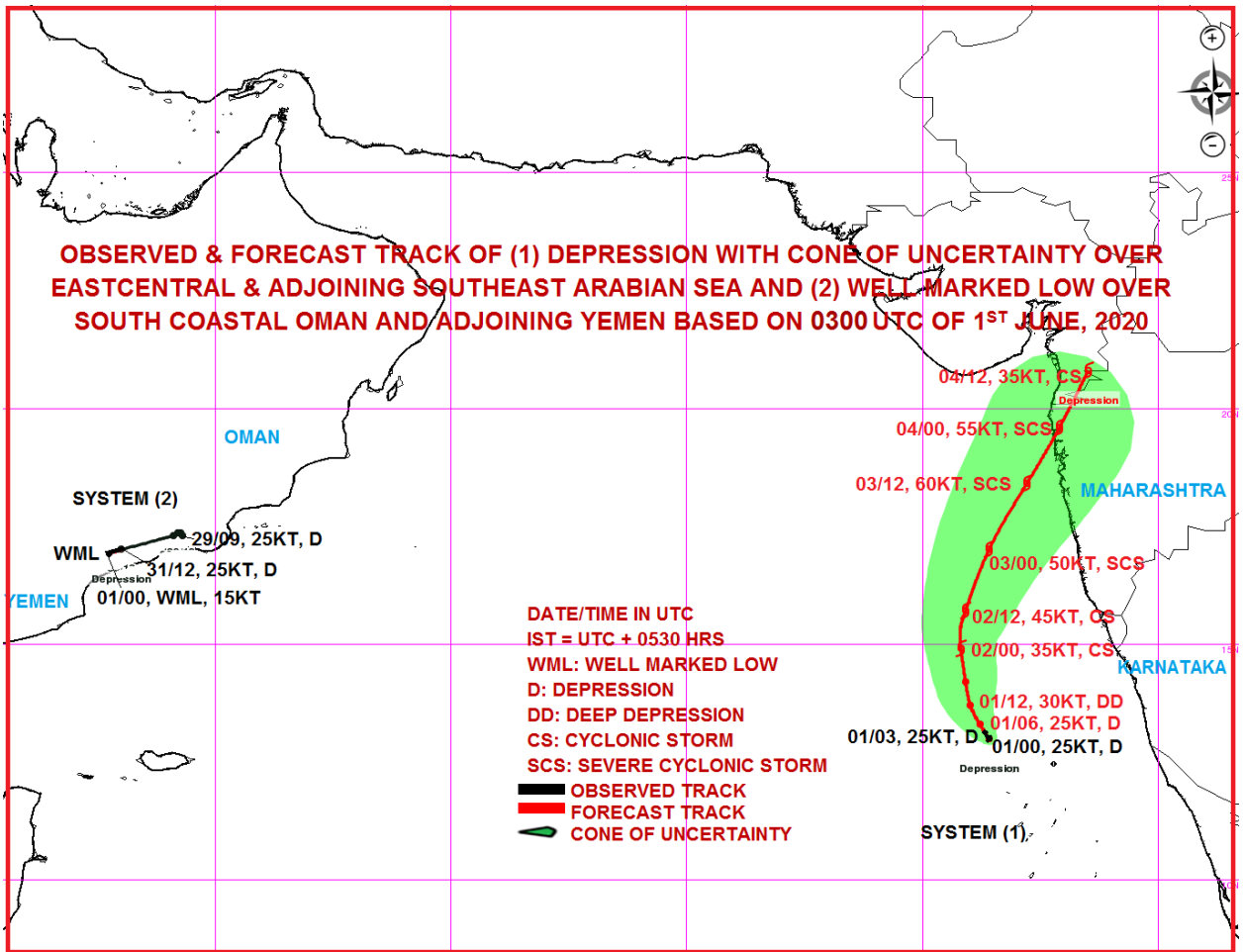
**(Sunitha Devi)**  
**Scientist-E, RSMC, New Delhi**

**Copy to: ACWC Chennai/ ACWC Mumbai/ MC Goa/ MC Bengaluru/ CWC Ahmedabad/ Thiruvananthapuram.**

**Spatial rainfall distribution: Isolated: <25%, A few: 26-50%, Many: 51-75%, Most: 76-100%**  
**Rainfall amount (mm): Heavy rain: 64.5 – 115.5, Very heavy rain: 115.6 – 204.4, Extremely heavy rain: 204.5 or more.**



**Spatial rainfall distribution: Isolated: <25%, A few: 26-50%, Many: 51-75%, Most: 76-100%**  
**Rainfall amount (mm): Heavy rain: 64.5 – 115.5, Very heavy rain: 115.6 – 204.4, Extremely heavy rain: 204.5 or more.**



**Spatial rainfall distribution: Isolated: <25%, A few: 26-50%, Many: 51-75%, Most: 76-100%**  
**Rainfall amount (mm): Heavy rain: 64.5 – 115.5, Very heavy rain: 115.6 – 204.4, Extremely heavy rain: 204.5 or more.**